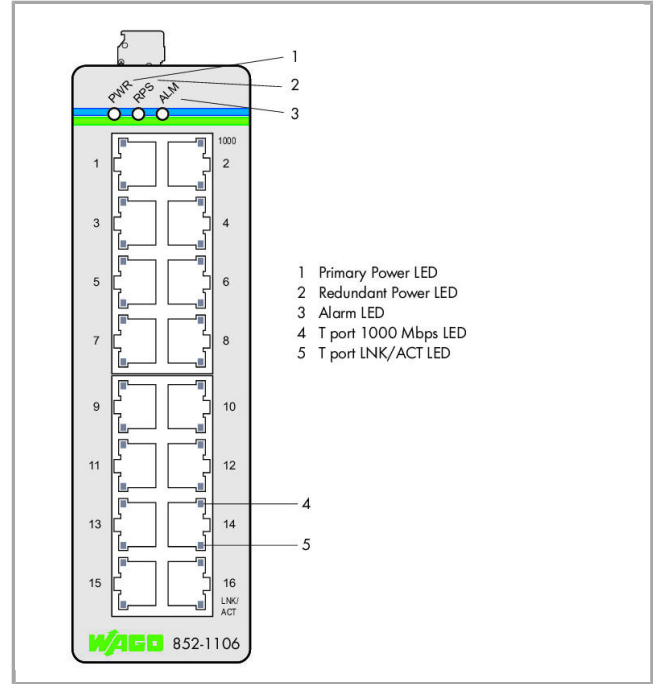


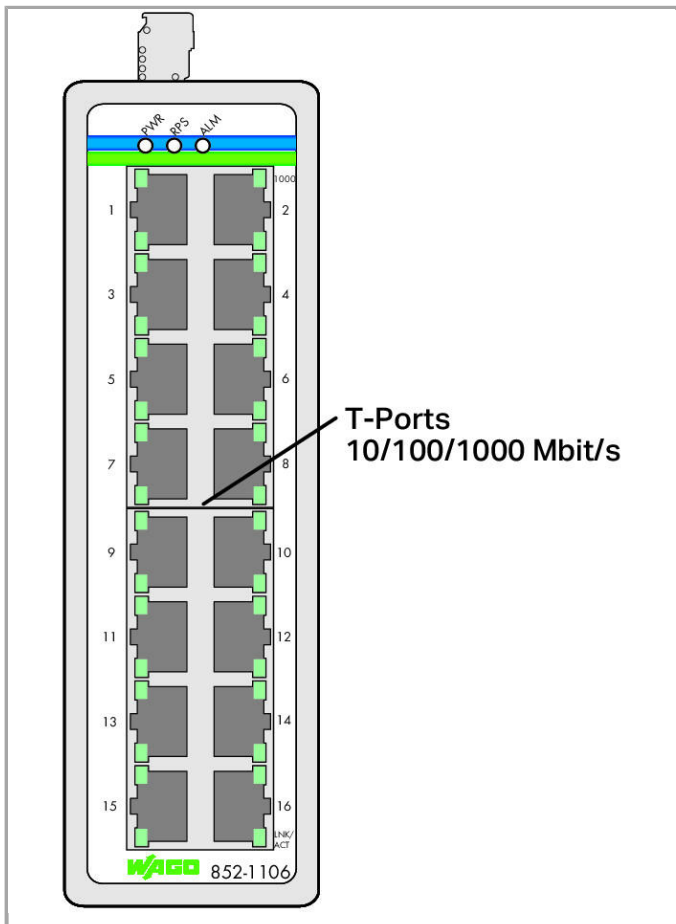
852-1106



RoHS Compliant

[BOMcheck.net](https://www.bomcheck.net)

Color:



Item description

The 852-1106 Industrial Switch is a 16-port 10/100/1000Base-T ETHERNET switch.

The switch has a rugged metal housing, redundant power supply and function monitoring with a relay. These functions and an operating range of -40 to +70°C make it ideal for a wide range of industrial applications.

Features:

- Redundant DC power supply
- Wide supply voltage range: 12 ... 60 VDC
- DIP switches to set alarm functions
- Full compliance with IEEE 802.3, 802.3u and 802.3ab standards
- Non-blocking, store-and-forward switching
- Auto-Negotiation on all 10/100/1000Base-T ports
- Auto-MDI/MDIX (crossover) at all 10/100/1000Base-T ports
- Integrated address look-up table, supports up to 8000 absolute MAC addresses
- Overvoltage protection
- Prioritization of Profinet Ethernet Frame (EtherType=0x8892) according to IEEE802.1p



Data

Technical Data

Switchingmodus	Store-and-forward, non-blocking
Number of 1000Base-T ports	16
Communication standards	IEEE 802.3 10BASE-T IEEE 802.3u 100BASE-TX/FX IEEE 802.3ab 1000BASE-T IEEE 802.3x Flow Control IEEE 802.3az Energy Efficient Ethernet IEEE 802.1p Prioritization
Redundancy function	Redundant DC power supply
Configuration options	DIP switch for signal contact
Diagnostics	Signal contact
MAC table (large)	8000 addresses
Jumbo frame size	10000 Byte
Supply voltage	DC 12 ... 60 V
Energy consumption max.	12 W
Baud rate	Copper cable: 10/1,000 Mbit/s
Transmission medium (communication/fieldbus)	Copper cable: Cat. 5e oder besser, 100 m maximale Leitungslänge
Panel	2 x DIP switch: Alarm function power supplies
Indicators	Device: LED (PWR, RPS) green: Power supply (primary), redundant power supply (secondary); LED (ALM) red: Alarm; per port: LED (1000, LNK/ACT) green: Status 1000 Mbps, LNK/ACT Port 1 ... 16

Connection data

Connection technology: communication/fieldbus	Copper cable: 16 x RJ-45
Anschluss technik: Versorgung	1 x im Gerät verbaute Stiftleiste: 231-436/001-000; mitgelieferte Federleiste (Steckverbinder MCS): 2231-106/026-000

Geometrical Data

Width	50 mm / 1.969 inch
Height from upper-edge of DIN-35 rail	120 mm / 4.724 inch
Depth	162 mm / 6.378 inch

Mechanical data

Weight	840 g
Color	metallic black
Housing material	Aluminum
Conformity marking	1

Environmental Requirements

Surrounding air (operating) temperature	-40 ... 70 °C
Surrounding air (storage) temperature	-40 ... 80 °C
Protection class	IP30
Relative air humidity (no condensation)	95 %
Type of mounting	DIN-35 rail
Vibration resistance	acc. to IEC 60068-2-6
Shock resistance	acc. to IEC 60068-2-27
EMC immunity to interference	acc. to EN 61000-6-2
EMC emission of interference	acc. to EN 61000-6-4

Commercial data

Country of origin	TW
GTIN	4055143604659
Customs Tariff No.	85176200000

Compatible products

transfer module



Item no.: 289-195 Interface module for ETHERNET RJ-45; for DIN 35 rail; with shield connection	289-195
--	---------

power supply



Item no.: 787-1102 Switched-mode power supply; Compact; 1-phase; 24 VDC output voltage; 1.3 A output current; DC OK signal	787-1102
--	----------



Item no.: 787-1112 Switched-mode power supply; Compact; 1-phase; 24 VDC output voltage; 2.5 A output current; DC OK signal	787-1112
--	----------



Item no.: 787-1122 Switched-mode power supply; Compact; 1-phase; 24 VDC output voltage; 4 A output current; DC OK signal	787-1122
--	----------



Item no.: 787-1602 Switched-mode power supply; Classic; 1-phase; 24 VDC output voltage; 1 A output current; NEC Class 2; DC OK signal	787-1602
---	----------



Item no.: 787-1606 Switched-mode power supply; Classic; 1-phase; 24 VDC output voltage; 2 A output current; NEC Class 2; DC OK signal	787-1606
---	----------



Item no.: 787-1622 Switched-mode power supply; Classic; 1-phase; 24 VDC output voltage; 5 A output current; TopBoost; DC OK contact	787-1622
---	----------

Item no.: 787-1632 Switched-mode power supply; Classic; 1-phase; 24 VDC output voltage; 10 A output current;	787-1632
--	----------



TopBoost; DC OK contact

**Item no.: 787-1702**

Switched-mode power supply; Eco; 1-phase; 24 VDC output voltage; 1.25 A output current

787-1702

**Item no.: 787-1712**

Switched-mode power supply; Eco; 1-phase; 24 VDC output voltage; 2.5 A output current

787-1712

**Item no.: 787-1722**

Switched-mode power supply; Eco; 1-phase; 24 VDC output voltage; 5 A output current

787-1722

wiring and connectors

**Item no.: 750-976**

PROFINET RJ-45 connector, IP20; ETHERNET 10/100 Mbit/s; for field assembly

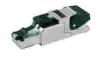
750-976

**Item no.: 750-977/000-011**

Connector ETHERNET; RJ-45; Cat. 6A; straight; Code T568A; AWG 22

/000-011

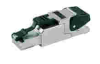
750-977

**Item no.: 750-977/000-012**

Connector ETHERNET; RJ-45; Cat. 6A; straight; Code T568B; AWG 22

/000-012

750-977

**Item no.: 750-977/000-013**

Connector PROFINET; RJ-45; Cat. 6A; straight; AWG 22

/000-013

750-977

**Item no.: 750-977/000-021**

Connector ETHERNET; RJ-45; Cat. 6A; straight; Code T568A; AWG 24

/000-021

750-977

**Item no.: 750-977/000-022**

Connector ETHERNET; RJ-45; Cat. 6A; straight; Code T568B; AWG 24

/000-022

750-977

**Item no.: 750-978/000-011**

Connector ETHERNET; RJ-45; Cat. 6A; straight; Code T568A; AWG 22; Strain relief

/000-011

750-978

**Item no.: 750-978/000-012**

Connector ETHERNET; RJ-45; Cat. 6A; straight; Code T568B; AWG 22; Strain relief

/000-012

750-978

**Item no.: 750-978/000-013**

Connector PROFINET; RJ-45; Cat. 6A; straight; AWG 22; Strain relief

/000-013

750-978

**Item no.: 750-978/000-021**

Connector ETHERNET; RJ-45; Cat. 6A; straight; Code T568A; AWG 24; Strain relief

/000-021

750-978

**Item no.: 750-978/000-022**

Connector ETHERNET; RJ-45; Cat. 6A; straight; Code T568B; AWG 24; Strain relief

/000-022

750-978





**Item no.: 750-979/000-011**

Connector ETHERNET; RJ-45; Cat. 6A; angled; Code T568A; AWG 22; Strain relief

/000-011

750-979



	Item no.: 750-979/000-012 Connector ETHERNET; RJ-45; Cat. 6A; angled; Code T568B; AWG 22; Strain relief	750-979
	Item no.: 750-979/000-013 Connector PROFINET; RJ-45; Cat. 6A; angled; AWG 22; Strain relief	750-979
	Item no.: 750-979/000-021 Connector ETHERNET; RJ-45; Cat. 6A; angled; Code T568A; AWG 24; Strain relief	750-979
	Item no.: 750-979/000-022 Connector ETHERNET; RJ-45; Cat. 6A; angled; Code T568B; AWG 24; Strain relief	750-979

Downloads

Documentation

Manual

16-Port 1000BASE-T Industrial Switch	V 1.0.0	pdf 1.3 MB	Download
--------------------------------------	---------	---------------	----------

Bid Text

852-1106		doc 30.2 kB	Download
----------	--	----------------	----------

Additional Information

Disposal; Electrical and electronic equipment, Packaging	V 1.0.0	pdf 265.8 kB	Download
--	---------	-----------------	----------

System Description

Industrial Switches – General Product Information		pdf 2.0 MB	Download
---	--	---------------	----------

CAD/CAE - Smart Data

CAD data

3D Download 852-1106		URL	Download
----------------------	--	-----	----------



Subject to changes.
